



The Foundation

Analyzing the Requirements

To find the best solution for your IT system and networking needs, you have to start by asking the right questions:

CS/10,000 utilizes a series of user-friendly Intelligent Questionnaires to assist you in gathering the business and technical requirements for your system.

This rich foundation of information is then passed on to the CS/10,000 expert system, which analyzes your requirements and selects candidate architectures and methodologies from our repositories of CSCL expertise.

- ◆ *"What type of system do we need?"*
"What are the steps required to build the system?"
"How will we manage the process?"
"What products should we use?"
"How will it all work together?"

◆ **INTELLIGENT QUESTIONNAIRES**

Project managers and architects alike are familiar with the time consuming and cumbersome process of collecting system requirements. The CS/10,000 Intelligent Questionnaires overcome this hurdle by walking you through the requirements gathering process with a straightforward question and answer format. As you proceed through a questionnaire, your responses are analyzed to determine what additional questions should be asked.

◆ **RULE -BASED EXPERT SYSTEM**

CS/10,000 utilizes a sophisticated expert system during each critical decision making process. The CS/10,000 expert system utilizes a unique multidimensional decision matrix, which makes it possible to solve very complicated problems containing a large number of variables. In addition, the expert system maintains its rule bases inside a relational database in an optimized format, which permits a virtually unlimited number of rules to be stored.

The Architecture

Designing the blueprints

CS/10,000 provides you with a rich set of intelligent Advisors, so you can easily design your architectural blueprints:

To achieve success in your IT system and networking projects, you need accurate and well defined blueprints of the system you are seeking to implement.

Building on the foundation of information collected by our Intelligent Questionnaires, the CS/10,000 suite of expert system based Advisors selects candidate architectures and constructs a project plan customized to your requirements.

The end result is a set of graphically rich templates of your network and IT system architectures, project methodology, effort estimation and a matrix of implementation tools.

◆ ARCHITECTURE SELECTION ADVISOR

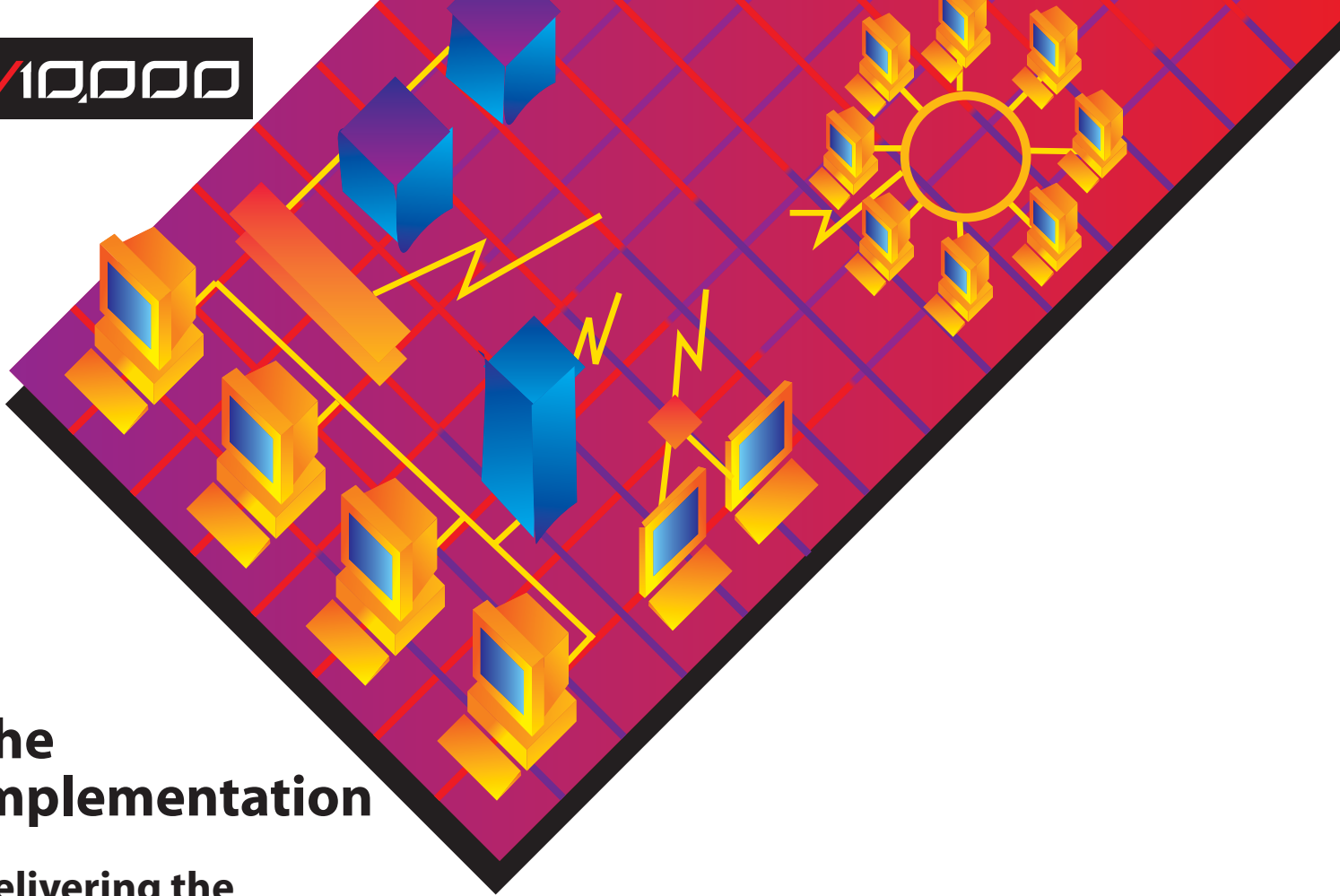
To succeed in IT system management, you must have a clear and accurate vision of the system you wish to implement. The Architecture Selection Advisor gathers your system requirements using a friendly question and answer interface. It then automatically selects the most appropriate architectures for your project from a repository of over 200 proven architectures, and presents them to you in the form of visual templates. Users also have editing privileges

◆ PROJECT PLAN ADVISOR

The Project Plan intelligent questionnaire, driven by an Expert System, contains knowledge of processes and methodologies for all phases of projects from start-up to completion. Outstanding project plans are developed in days not weeks. The documentation and knowledge links are true productivity gain multipliers and can save time and money while preserving quality and achieving excellence.

◆ PROJECT ESTIMATION ADVISOR

Every experienced project manager knows it is difficult to predict the effort required to complete an IT System project, yet an accurate estimate can mean the difference between success and failure. The patented CS/10,000 Project Estimation Advisor uses neural network technology to give you an accurate estimate of project effort immediately. This initial estimate becomes increasingly accurate over time, as the Advisor learns from each successive project.



The Implementation

Delivering the system

CS/10,000 gives you all the necessary tools to manage your project to successful completion:

The gap between what project managers need and what most project management tools provide is significant. CS/10,000 addresses the most critical needs of project managers - time and money.

CS/10,000 is extremely easy to use and eliminates the excessive amount of training and expense typically involved with the deployment of a project management tool, in house. With CS/10,000, you will experience results immediately.

Once the expert system has generated your project plan, use CS/10,000 to manage every aspect of the ongoing project, from team building to timesheets to comprehensive project reporting.

◆ GLOBAL PROJECT COMMUNICATION & CONTROL

CS/10,000 provides a global view of all projects across the entire corporation. In a matter of seconds, you can drill down from the corporate to the departmental workgroup levels to view project status and resource allocation on any past, current or future project.

◆ VIRTUAL METHODOLOGY

CS/10,000's expert system will automatically generate your project plan based on your requirements. Drawing from a comprehensive repository of development techniques, CS/10,000 provides customized support for a variety of development lifecycles, including client/server and EIS systems, data warehouse, software maintenance and enhancement, internet site development, legacy and networks

◆ PROJECT DOCUMENTATION AND REPORTING

It is difficult to keep project documentation current, particularly with ever narrowing time windows that are allocated to project management. CS/10,000 provides you with a number of pre-formatted document templates. Effortlessly track costs, time and resources for individual or multiple projects, with more than thirty automated project status reports

◆ ACCESSIBLE KNOWLEDGE MANAGEMENT

The CS/10,000 project plan provides ubiquitous access to knowledge. This includes both CSCL knowledge which is integrated into the tool and user knowledge which is acquired during project planning and deployment. This can be stored in template form, allowing for continuous improvement as each new project benefits from the knowledge acquired and applied from previous projects.